

## DLAB Dry Bath Series

### HB105-S1/S2/HB150-S1/S2/HB120-S/SC/HB60-S/H100-Pro

Small footprint. Rapid & accurate temperature control. Overheating protection.  
Accommodates various types of tube holders to meet every lab need.



HB105-S1



HB105-S2



HB150-S1



HB150-S2



HB120-S/SC



HB60-S



MiniHCL100



H100-Pro

## Features

- Accurate and uniform temperature control
- Digital control and display of time and temperature
- Wide range of temperature control for different applications
- Monitor temperature in real-time, and set timer
- Wide range of heating blocks compatible with most popular lab tubes
- Overheating protection ensures sample and user safety
- Equipped with a lid for heat preservation, and preventing pollution
- User-friendly setting knob for easy and simple operation



## HB105-S1 HB105-S2 HB150-S1 HB150-S2

**Durable, reliable safe and convenient to use**

## Features

- Single and double heat block modules available
- Highest temperature up to 150 °C
- Buzzer alert when the time is up
- External temperature sensor PT1000

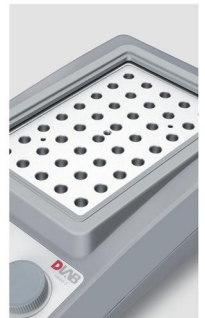


## HB120-S/SC/HB60-S Easy to use, safe and durable

## Features

- Low profile - space saving design
- The max heating temperature is 120°C (HB120-S/HB120-SC), and the timer function support available
- Discrete heating temperature levels: 25 °C, 30 °C, 37 °C, 45 °C, 60 °C (HB60-S)
- 5mL×30+10mL×8 dual purpose heating block
- Temperature calibration function inbuilt for users (HB120-SC)








Specifications	H100-Pro	HB105-S1 HB105-S2	HB150-S1 HB150-S2	HB120-S/SC	HB60-S
Temperature range[°C]	Room temp+5-100	Room temp+5-105	Room temp+5-150	Room temp+5-120	Room temp+5-60
Temperature Setting range [°C]	0-100	25-105	25-150	15-120	5 gears:25, 30, 37,45,60
Temperature control accuracy[°C]	±0.5	25-90: ±0.3 90-105: ±0.6	25-90: ±0.3 90-150: ±0.6	±0.5	±0.5
Temperature uniformity@ 37°C[°C]	±0.5	±0.2	±0.2	±0.5	±0.3
Power [W]	200	HB105-S1:100 HB105-S2:200	HB150-S1:100 HB150-S2:200	170	160
Time setting range	0min-99h59min	0min-99h59min	0min-99h59min	0min-99h59min	0min-99h59min
External sensor	-	Yes	Yes	-	-
Display	TFT	LED	LED	LED	LED
Voltage,Frequency	110/220V,50/60HZ	110/220V,50/60HZ	110/220V,50/60HZ	110/220V,50/60HZ	110/220V,50/60HZ
External Dimension[WxDxH]	200x235X120	290x210X120	290x210X120	175X290X85	175X290X85
Weight (kg)	7.3	3.2	3.2	3	2.5
Operating temperature[°C]	10-40	10-40	10-40	10-40	10-40
Operating humidity[% RH]	<80	<80	<80	<80	<80



## HB105-S1 / HB105-S2 / HB150-S1 / HB150-S2

Cat.No	18900459	18900460	18900461	18900462	18900463
Block types					
Capacity	0.2mL×30	0.5mL×20	1.5mL×20	2mL×20	5mL×12
Diameter×depth	6.4×15mm	7.85×28.4mm	11×34.7mm	11×34.7mm	16.6×46mm
Cat.No	18900464	18900465	18900522	18900523	18900520
Block types					
Capacity	15mL×12	50mL×4	Dual purpose block, bead bath/water bath Adapt to S1	Dual purpose block, bead bath/water bath Adapt to S2	Aluminum beads
Diameter×depth	16.6×73mm	29.2×73.5mm	95×76×56mm	151×95×62mm	—

## Mini HCL100/Mini HC100/Mini H100

Cat.No	18900414	18900415	18900416	18900428
Block types				
Capacity	0.2mL×40	0.5mL×24	1.5mL×15	2mL×15
Diameter×depth	6.4×20 mm	8.2×28.4mm	11.2×31mm	11×31mm
Cat.No	18900417	18900426	18900427	
Block types				
Capacity	5mL×6	15mL×4	50mL×2	
Diameter×depth	17×31mm	16.4×45mm	29×45mm	