

DLAB Dry Bath Series

HB105-S1/S2/HB150-S1/S2/HB120-S/SC/HB60-S/H100-Pro

Small footprint. Rapid & accurate temperature control. Overheating protection.
Accommodates various types of tube holders to meet every lab need.



HB105-S1



HB105-S2



HB150-S1



HB150-S2



HB120-S/SC



HB60-S



MiniHCL100



H100-Pro

Features

- Accurate and uniform temperature control
- Digital control and display of time and temperature
- Wide range of temperature control for different applications
- Monitor temperature in real-time, and set timer
- Wide range of heating blocks compatible with most popular lab tubes
- Overheating protection ensures sample and user safety
- Equipped with a lid for heat preservation, and preventing pollution
- User-friendly setting knob for easy and simple operation



H100-Pro

Digitally accurate with exceptional temperature uniformity

Features

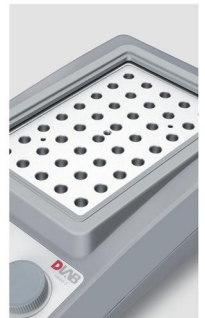
- Customizable user setting program with up to 6 sequential steps
- Temperature calibration function inbuilt for users
- Magnetic heat block mounting eliminating need of any tools
- Interchangeable sample blocks designed to provide versatility, easy cleaning and disinfecting
- Accurate temperature control of each heating block with lid to minimize the heat loss

Applications

Suitable for clinical laboratories, for sample preparation, Enzyme-substrate reactions, biochemistry tests, serum coagulation tests and many other.



Specifications	H100-Pro	HB105-S1 HB105-S2	HB150-S1 HB150-S2	HB120-S/SC	HB60-S
Temperature range[°C]	Room temp+5-100	Room temp+5-105	Room temp+5-150	Room temp+5-120	Room temp+5-60
Temperature Setting range [°C]	0-100	25-105	25-150	15-120	5 gears:25, 30, 37,45,60
Temperature control accuracy[°C]	±0.5	25-90: ±0.3 90-105: ±0.6	25-90: ±0.3 90-150: ±0.6	±0.5	±0.5
Temperature uniformity@ 37°C[°C]	±0.5	±0.2	±0.2	±0.5	±0.3
Power [W]	200	HB105-S1:100 HB105-S2:200	HB150-S1:100 HB150-S2:200	170	160
Time setting range	0min-99h59min	0min-99h59min	0min-99h59min	0min-99h59min	0min-99h59min
External sensor	-	Yes	Yes	-	-
Display	TFT	LED	LED	LED	LED
Voltage,Frequency	110/220V,50/60HZ	110/220V,50/60HZ	110/220V,50/60HZ	110/220V,50/60HZ	110/220V,50/60HZ
External Dimension[WxDxH]	200x235X120	290x210X120	290x210X120	175X290X85	175X290X85
Weight (kg)	7.3	3.2	3.2	3	2.5
Operating temperature[°C]	10-40	10-40	10-40	10-40	10-40
Operating humidity[% RH]	<80	<80	<80	<80	<80





Blocks

H100-Pro/HC110-Pro/HCM100-Pro/HM100-Pro

Cat.No	Magnetic	18900401	18900402	18900403	18900404	18900405	
	Mechanical fixation	18900344	18900343	18900345	18900637	18900638	
Block types							
Capacity	0.5mL×24	1.5mL×24	2mL×24	5mL×8 round bottom	5mL×8 cone bottom		
Speed	1500rpm	1500rpm	1500rpm	1500rpm	1400rpm		
Diameter×depth	8.1×26mm	10.9×30.8mm	10.9×30.8mm	13.6×42mm	17×51.5mm		
Cat.No	Magnetic	18900874	18900406	18900407	18900420	18900423	18900746
	Mechanical fixation	—	18900241	18900242	18900349	18900350	—
Block types							
Capacity	1.5mL×24 Chromatography Vial	15mL×8	50mL×4	0.2mL×8 PCR strips or 0.2mL×96 PCR microplate		ELISA microplate	Deep well Plate
Speed	1500rpm	800rpm	600rpm	1500rpm		1500rpm	—
Diameter×depth	12×20.5mm	16.9×80mm	29.6×80mm	5.7×13.2mm		127×85mm	127×85×42mm

HB120-S/HB120-SC (Standard:151×95×50mm, Thin:151×95×36.5mm)

Cat.No	Standard	18900218	18900219	18900253	18900220	18900818	18900221	
	Thin	18900274	18900275	18900276	18900277	18900877	—	
Block types								
Capacity	0.2mL×54	0.5mL×40	1.5mL×40	2mL×40	2mL×60 Ampoules tubes		5/15mL×28	
Diameter×depth	6.4×15mm	8.2×26.4mm	11×34.7mm	11×34.7mm	12×37mm	17×48mm		
Cat.No	Standard	18900222	18900224	18900223	18900546		—	
	Thin	—	18900278	18900279	—		18900504	
Block types								
Capacity	50mL×8	0.2mL+0.5mL +1.5/2mL 18+18+18	microplate	5mL blood collection tubex45		0.2mL×8 PCR strips or 0.2mL×96 PCR microplate		
Diameter×depth	29.8×48mm	Each capacity	127×85mm	13.5×48mm		5.7×13.2mm		
Capacity	Cat. No.18900523			Capacity				
Two-in-one block, bead bath/water bath Adapt to S2			Aluminum beads				