

MX-M

Microplate Mixer

Features

- Wide range of speed from 0 to 1,500 rpm (Double microplate: 0-1,000 rpm)
- Excellent performance with electronic speed control
- High speed and effective mixing for microplates
- With adapters for most popular vessels and microtiter plates
- Used for various mixing applications with optional adapters
- Maintenance-free brushless DC motor



Applications

DLAB Microplate Mixer is used for holding single or double microplates. The footprint of MX-M Microplate Mixer occupies less bench space and makes the storage easier. It is widely used in life sciences including microbiology, cell and molecular biology, immunology and biotechnology



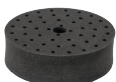
Brushless DC motor



Wide range of accessories

VT1.3.1 tube adapter Cat. No.18900020

for 48 holes test tubes, Ø6mm

**VT1.3.2 tube adapter** Cat. No.18900021

for 15 holes test tubes, Ø10mm

**VT1.3.3 tube adapter** Cat. No.18900022

for 12 holes test tubes, Ø12mm

**VT1.3.4 tube adapter** Cat. No.18900023

for 8 holes test tubes, Ø16mm

**VT1.3.5 tube adapter** Cat. No.18900024

for 8 holes test tubes, Ø20mm

**VT1.3.6 Platform pad** Cat. No.18900043

Ø99mm, multiple small tubes and vessels

**VT1.3.8 tube adapter** Cat. No.18900395

for 24 holes test tubes, Ø10mm

**VT1.3.9 PCR tube adapter** Cat. No.18204185for 56 test PCR tubes, strips of 8,
Ø5mm (0.1mL-0.5mL)**VT1.3.10 tube adapter** Cat. No.18900855

for 4 holes, Ø28mm (50mL)

**VT1.3.11 Tube adapter** Cat. No.1890086212XØ9.8mm+12XØ6.6mm+12XØ5mm
(1.5/2.0/0.5/0.2mL)**VT1.3.12 Large Platform Multi-Specimen Test Tube Adapter** Cat. No.1890087544 holesXØ5mm+55 holesXØ6.6mm+30
holesXØ9.8mm (1.5/2.0/0.5/0.2mL)**PS1.1 Universal top plate** Cat. No.18900067

Used with tube adapters

**PS1.2 Single Well Plate Tray Kit** Cat. No.18204340Work Plate (Suitable for fully-skirted PCR
plates, cell culture plates, enzyme
immunoassay plates, and deep-well
plates. Use with a well plate adapter for
half-skirted or non-skirted PCR plates.)**PS1.3 Double microplate clamps** Cat. No.18204341

Double microplate clamps

**Specifications****MX-M**

Shaking movement	Orbital
Orbital diameter	4.5mm
Max. shaking weight (with accessory)	0.5kg
Motor type	Brushless DC motor
Motor rating input	18W
Motor rating output	10W
Speed range	Single microplate: 0-1500rpm Double microplate: 0-1000rpm
Speed display	Scale
Voltage,Frequency	100-240V,50/60Hz
Power	20W
Dimension	260×150×80mm
Weight	3kg
Permissible ambient temperature and humidity	5-40°C,80%RH
Protection class	IP20

